

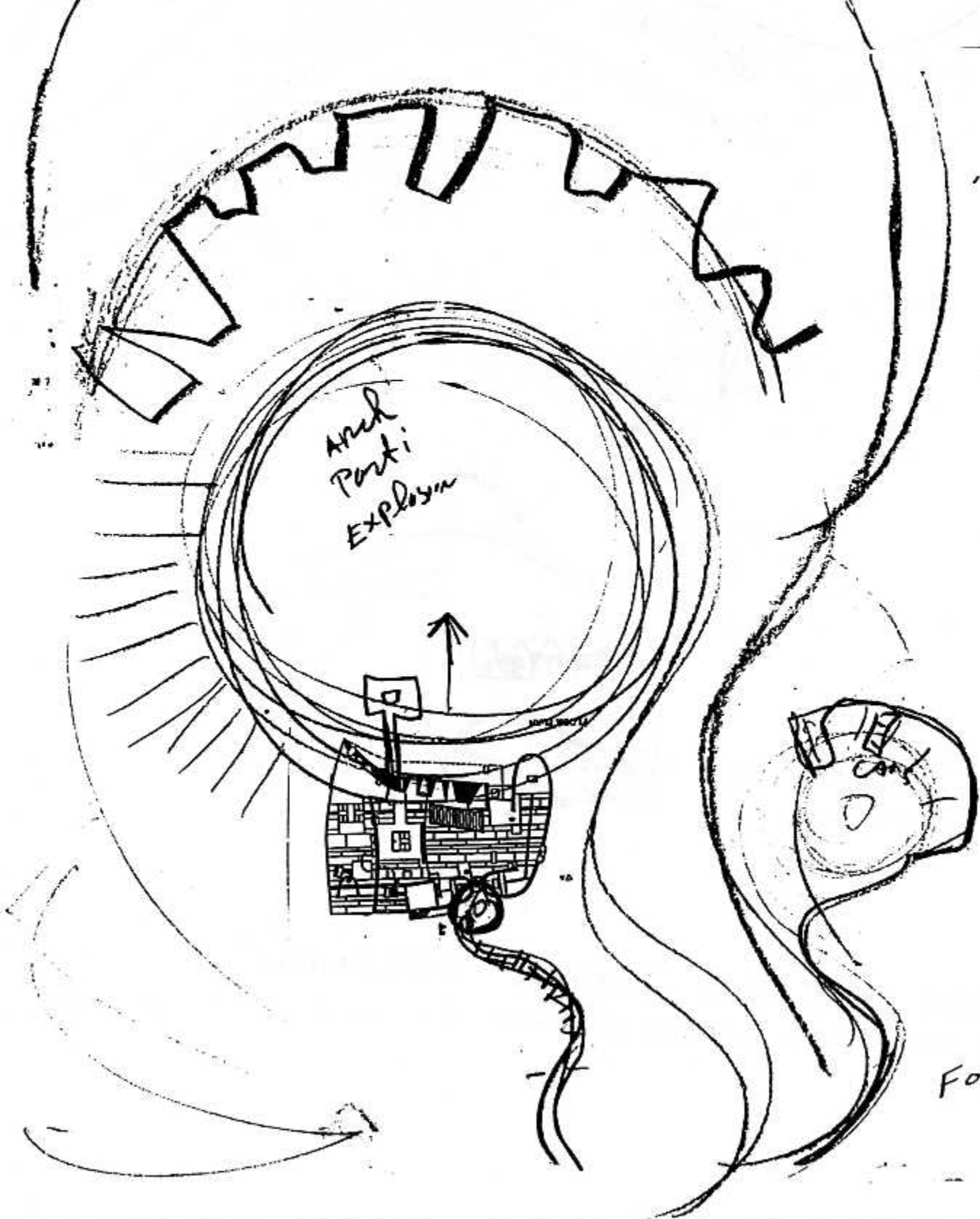
see others - interesting, combined interpretations, etc. - ALSO IN HIST PAVILION, URBAN DESIGN, NATURE. (READABLE FORM: PROCESSES)

Examples 98

Formalism: Architectural Supplement Theory: "Implosion/Explosion" of Archtypes (SITE/Arch

See Penk Sheet
Jul 11/01.

This packet shows Basic geometric archtypes can explode from an interior pattern of space into the landscape, or implode from a landscape setting to the interior. Think of these as abstract forms—that are experienced in reality (at full scale, 3d, sequential motion). This not only helps you appreciate architecture and site, but design in general. Try designing your own (see other exercise sheets)



Arch
Part:
Explosion

FORMSL

(E)

EXISTING HILL



HILLS or MOUNTAINS



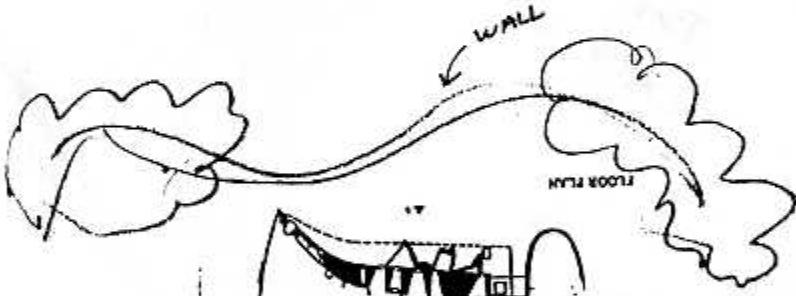
Trees



EXISTING RIVER

IMPLOSION FORMS INTO BUILDING

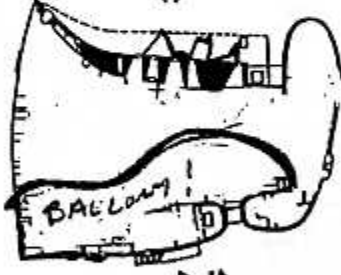
"Implosion"



WALL

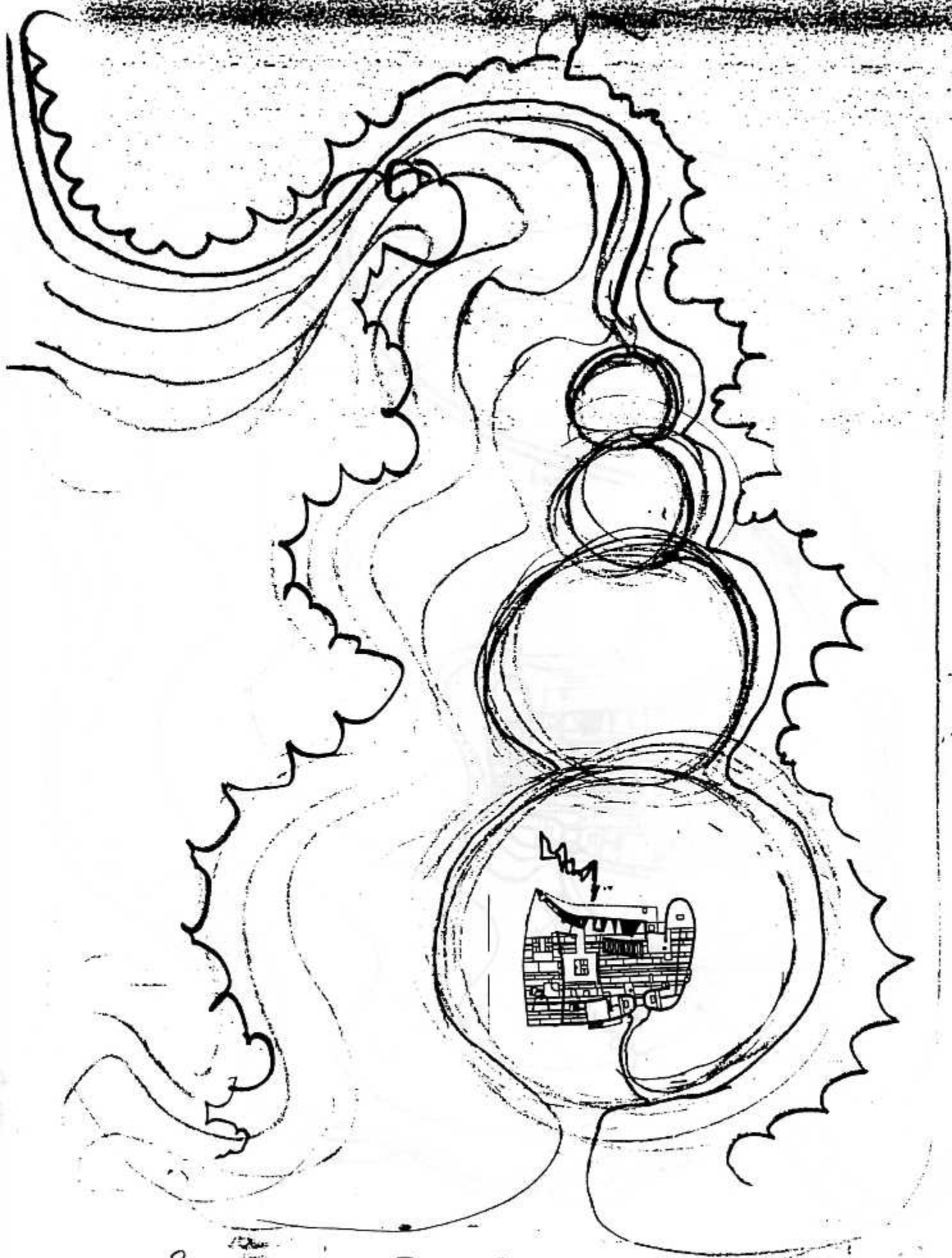
FLOOR PLAN

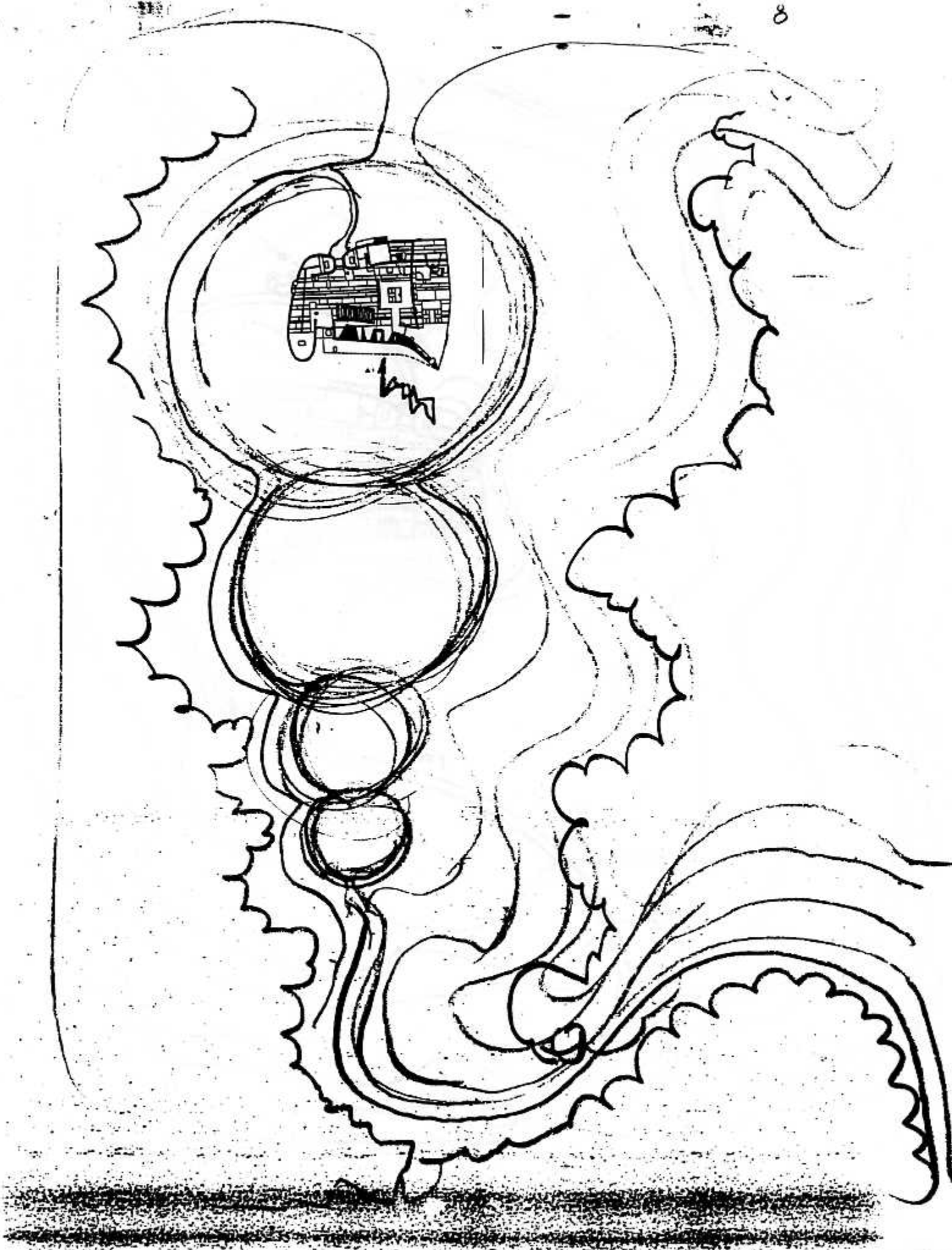
THE INTERIOR BALCONY FORM & WALL RELATES TO RIVER

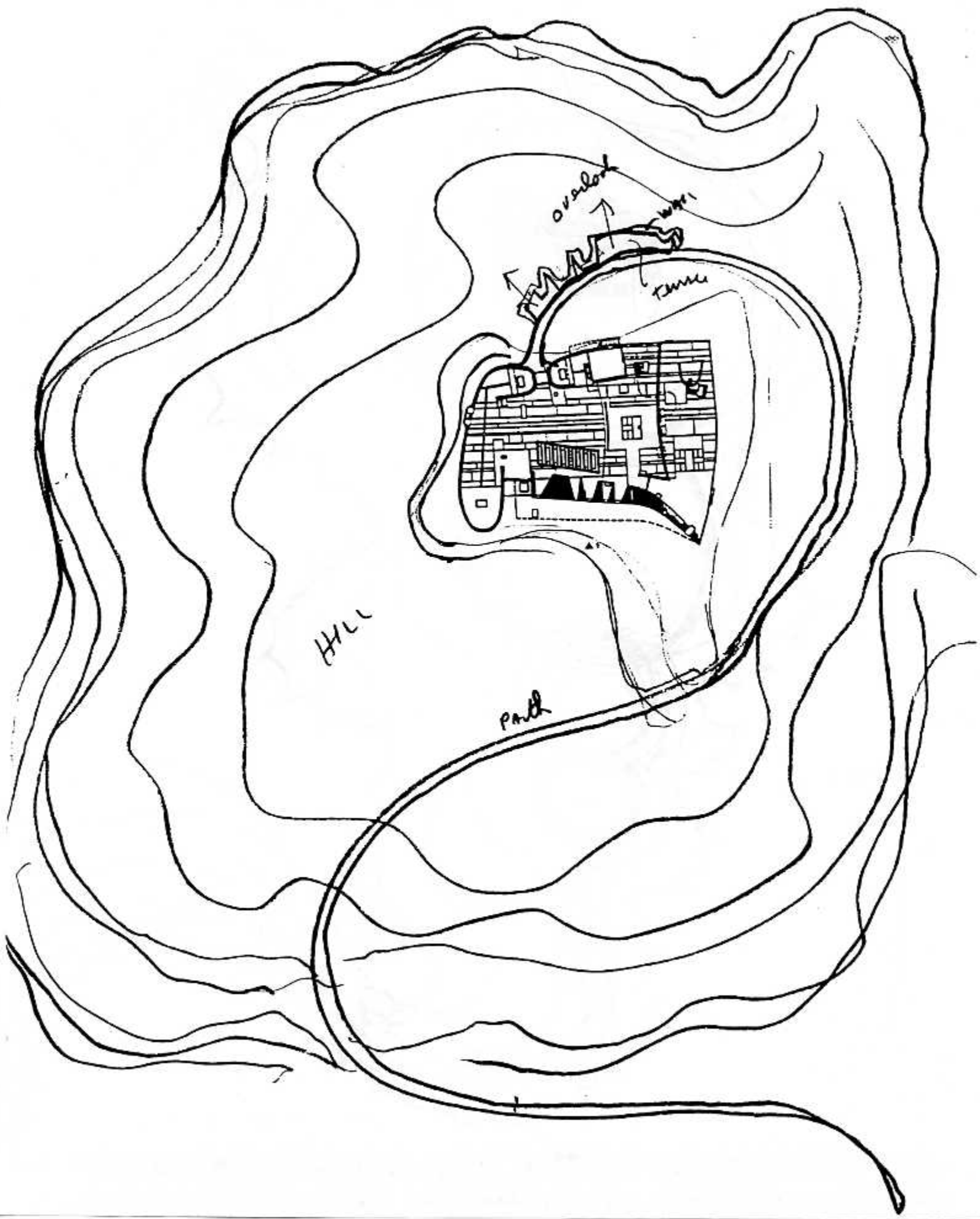


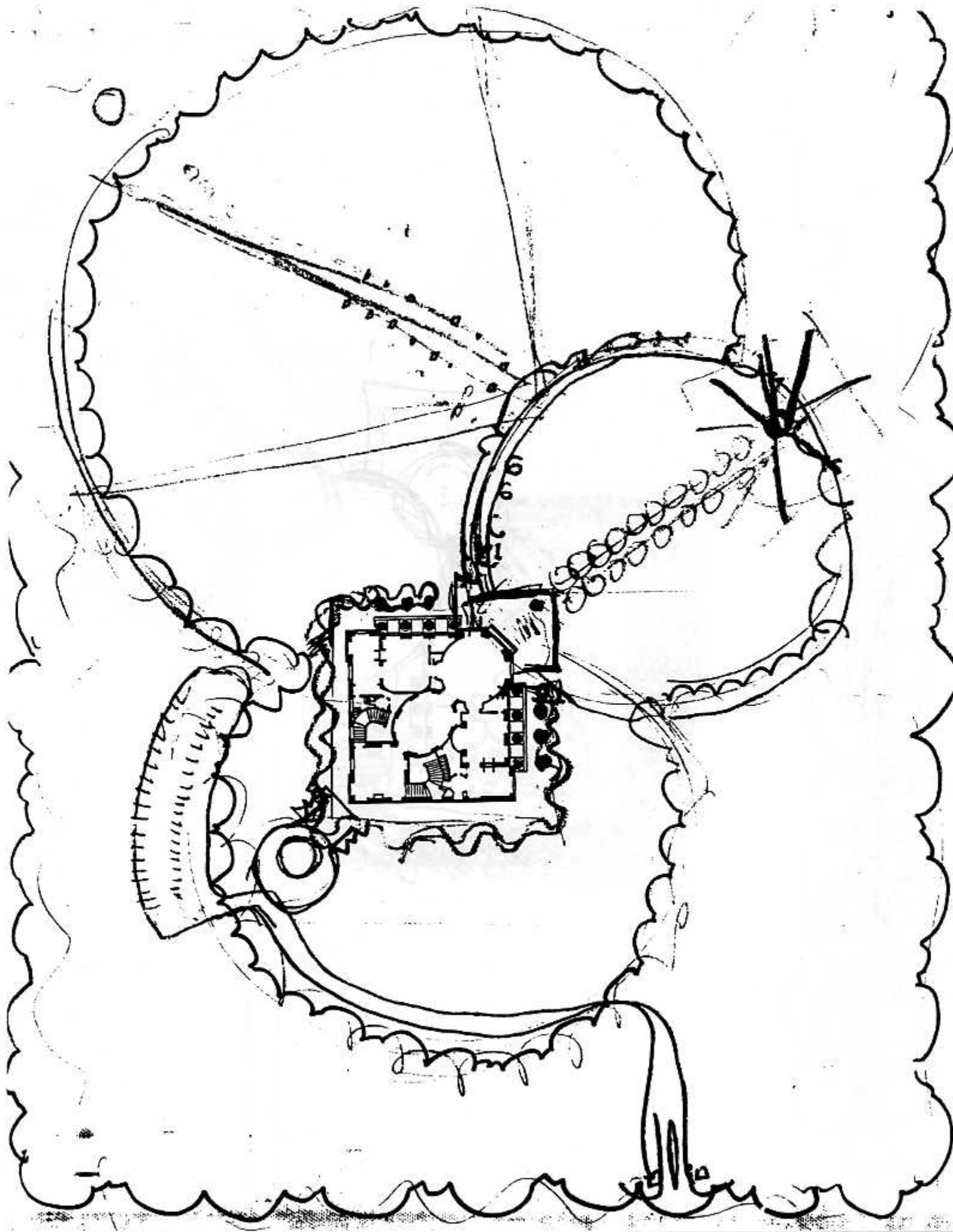
BALCONY

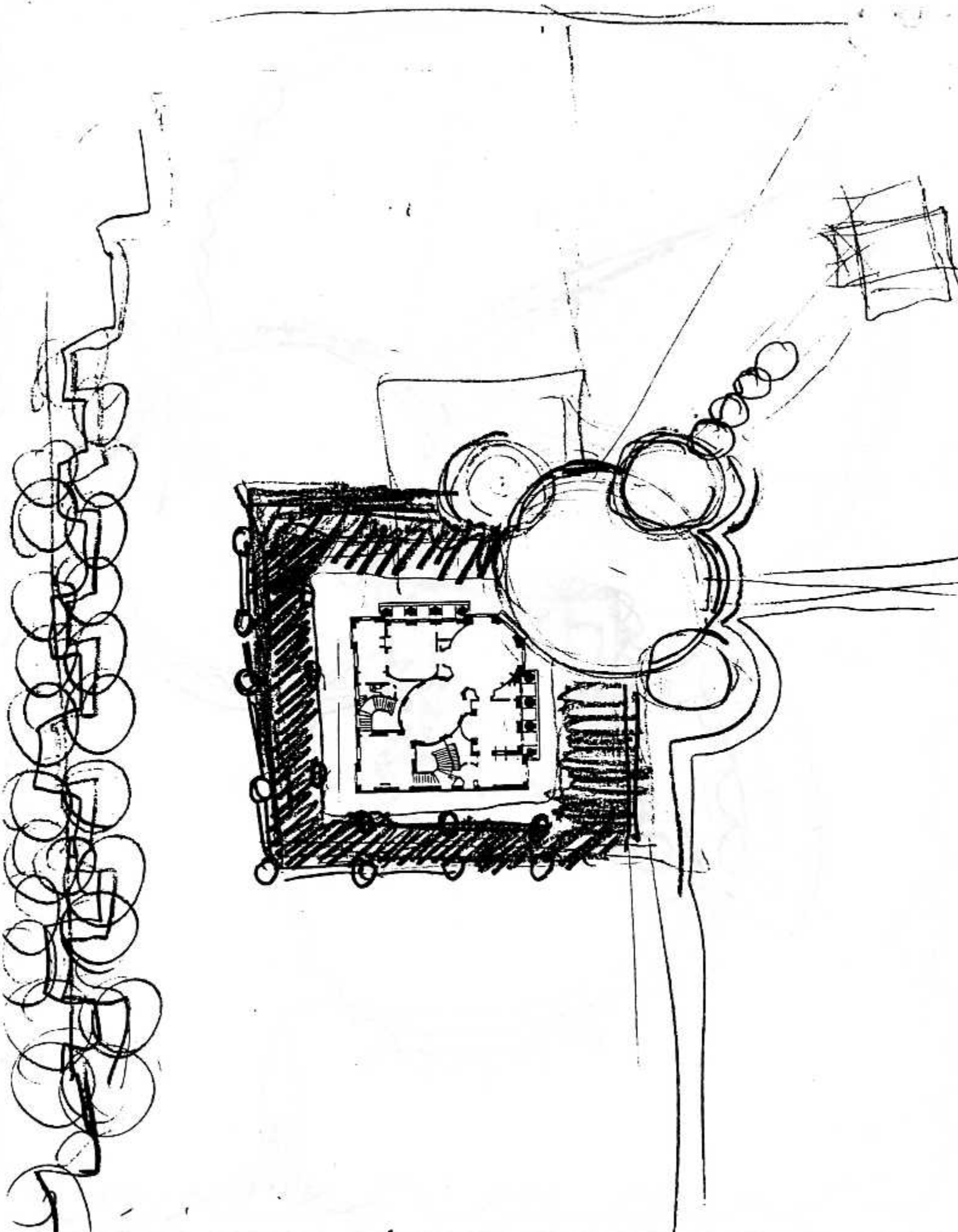
ARCHITECTURAL FORMAL "IMPLOSION"
 (A PROGRESSION OF FORMS FROM EXTERIOR SITE TO INTERIOR.)

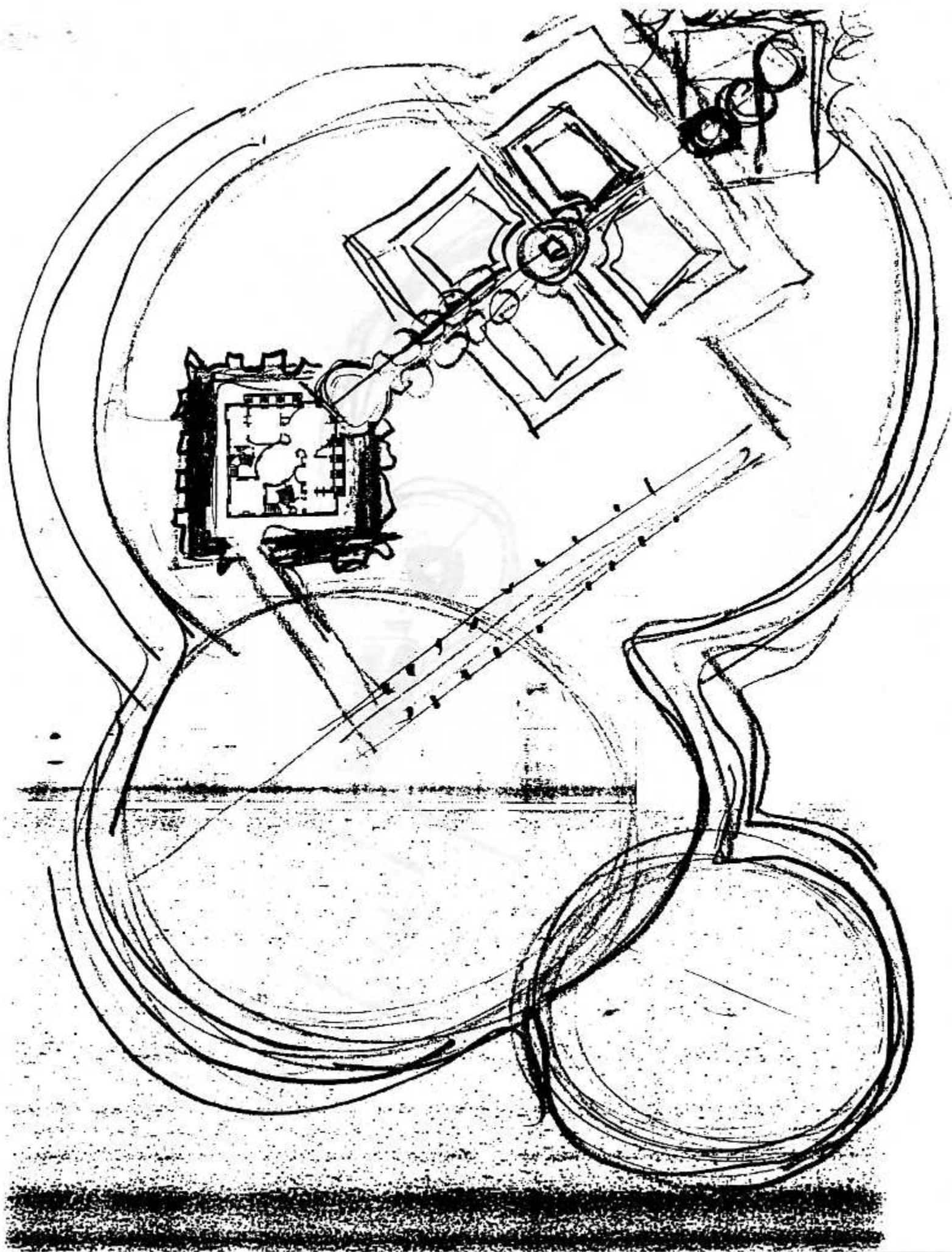




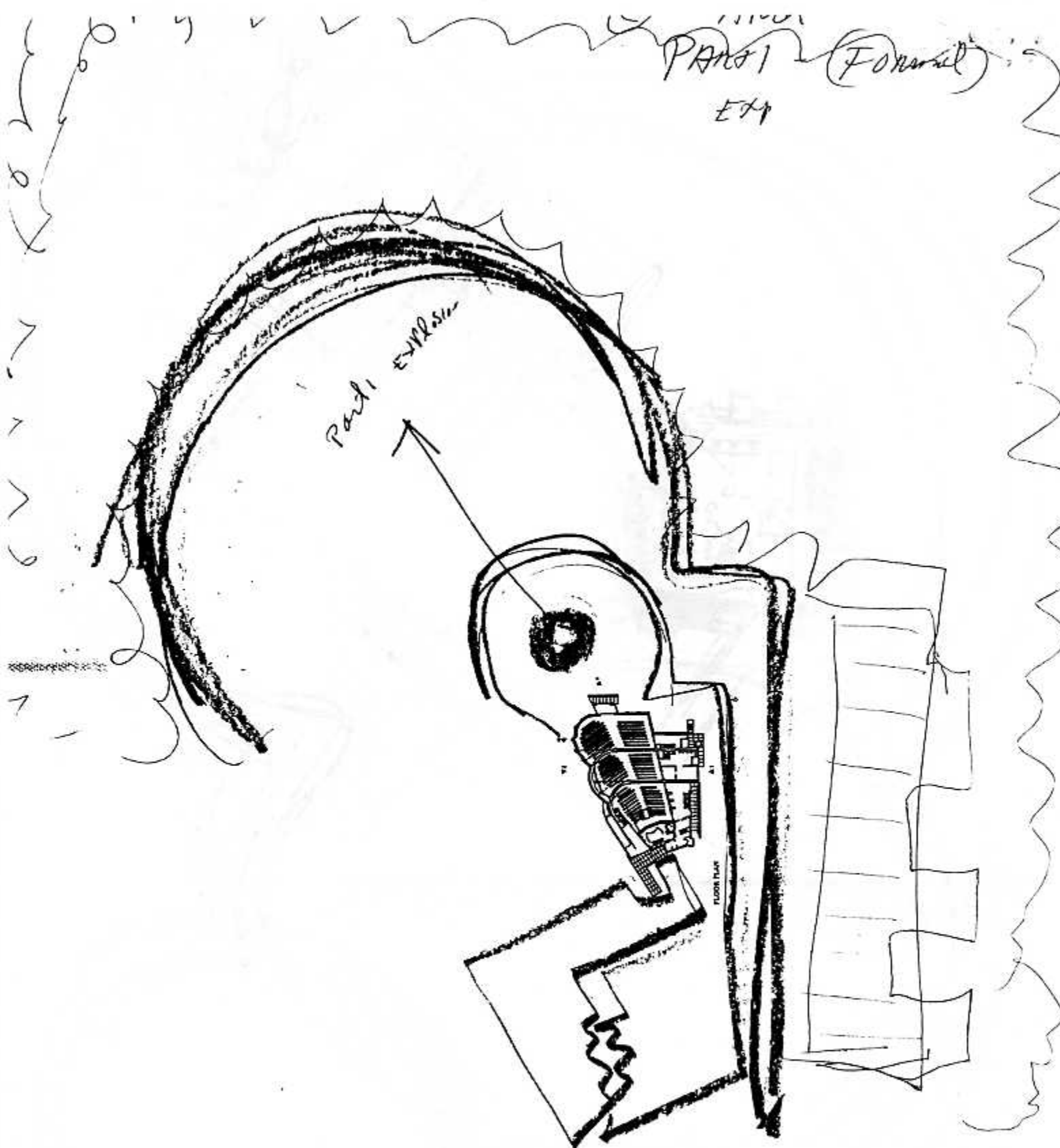


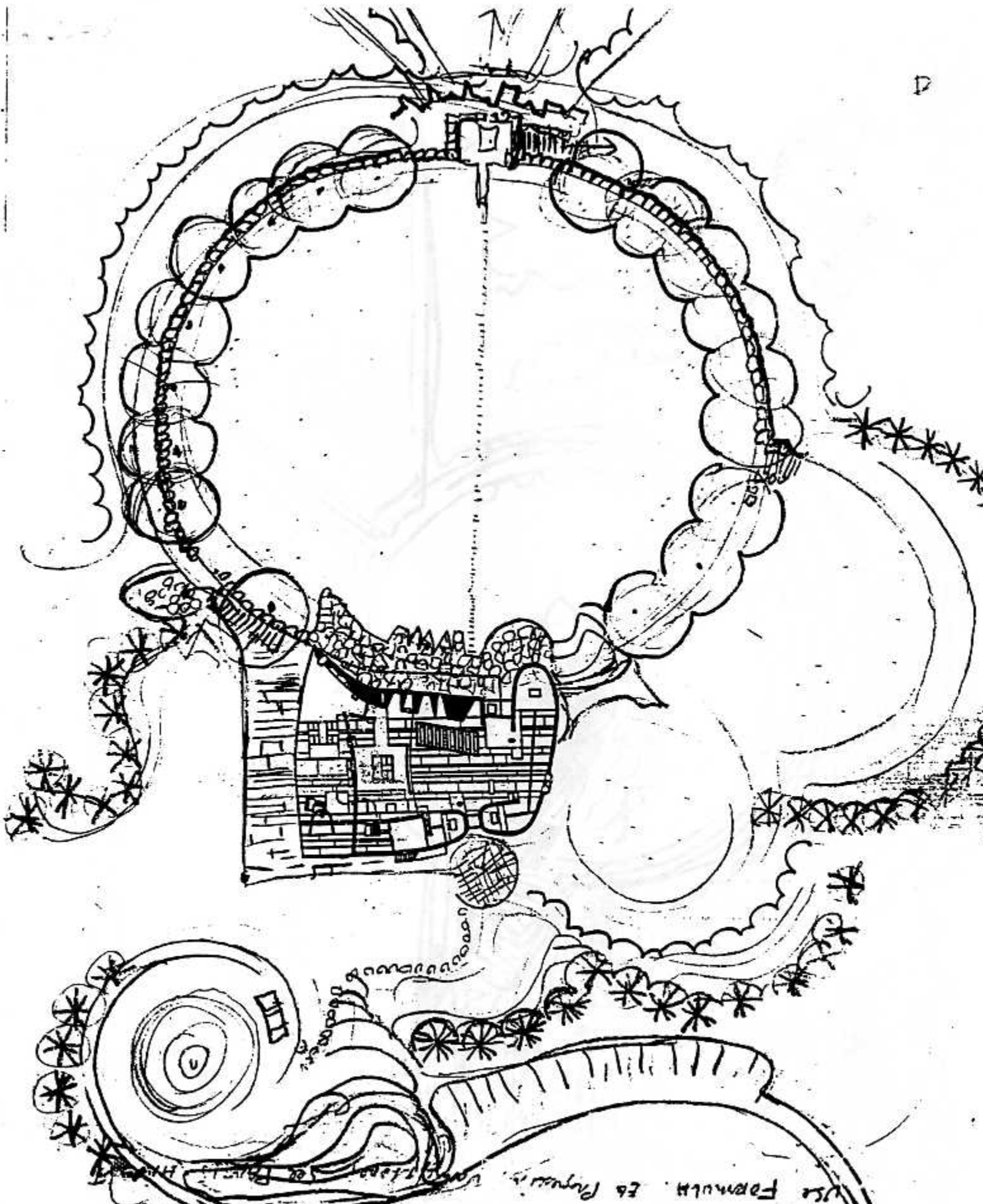






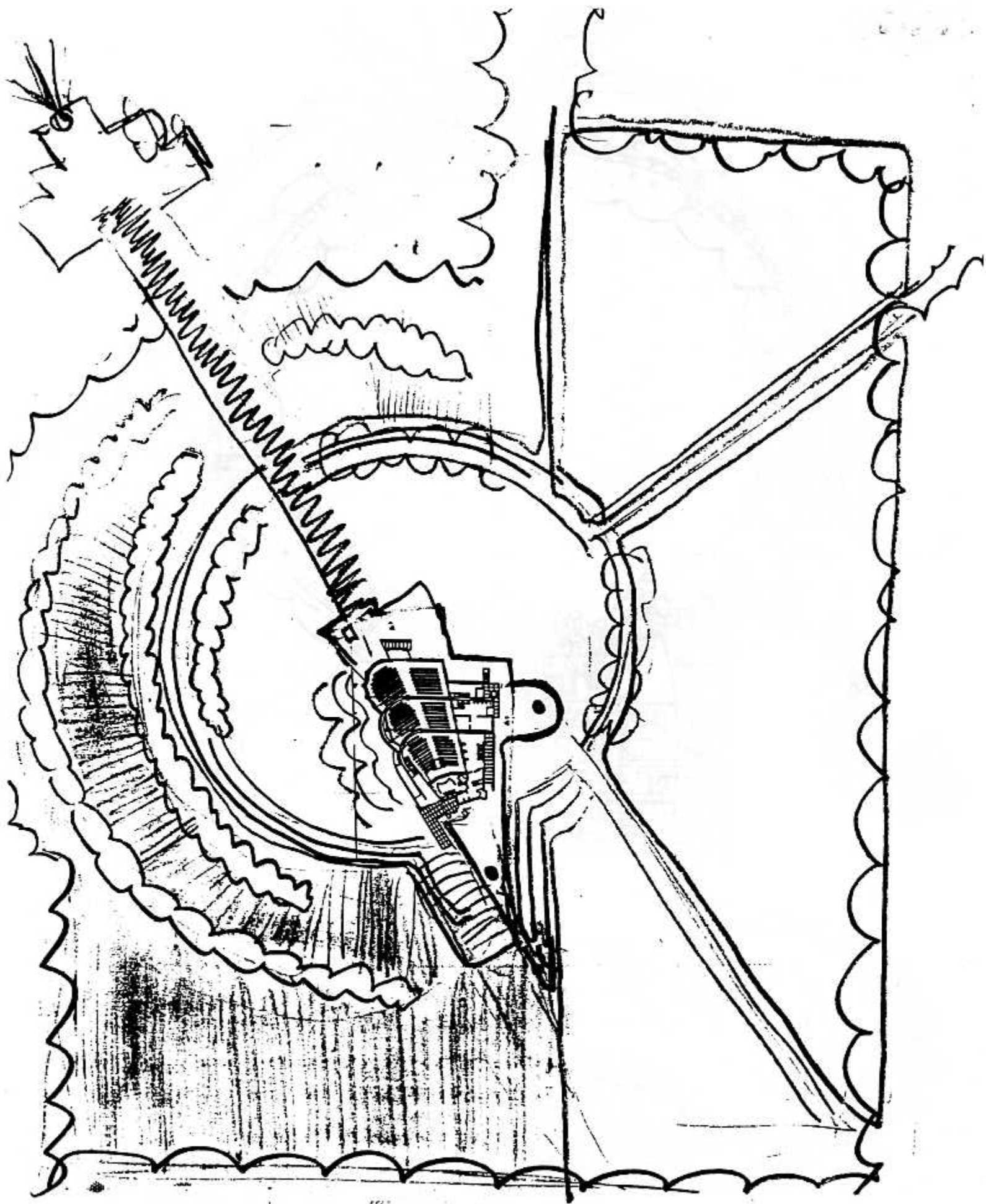
111001
PART (Forward)
E74





FORMER PART 1 - EXHIBIT (BUILDING - 6 months)
 THINK WHISKY SPACE BE NEAR GARDENS, SPECIAL
 USE FORMULA. EA PAPER. CONSIDER SEE PART 1 H...

SMY
 HUC



DESIGN CONTINUUM⁴

INTERIOR contest.

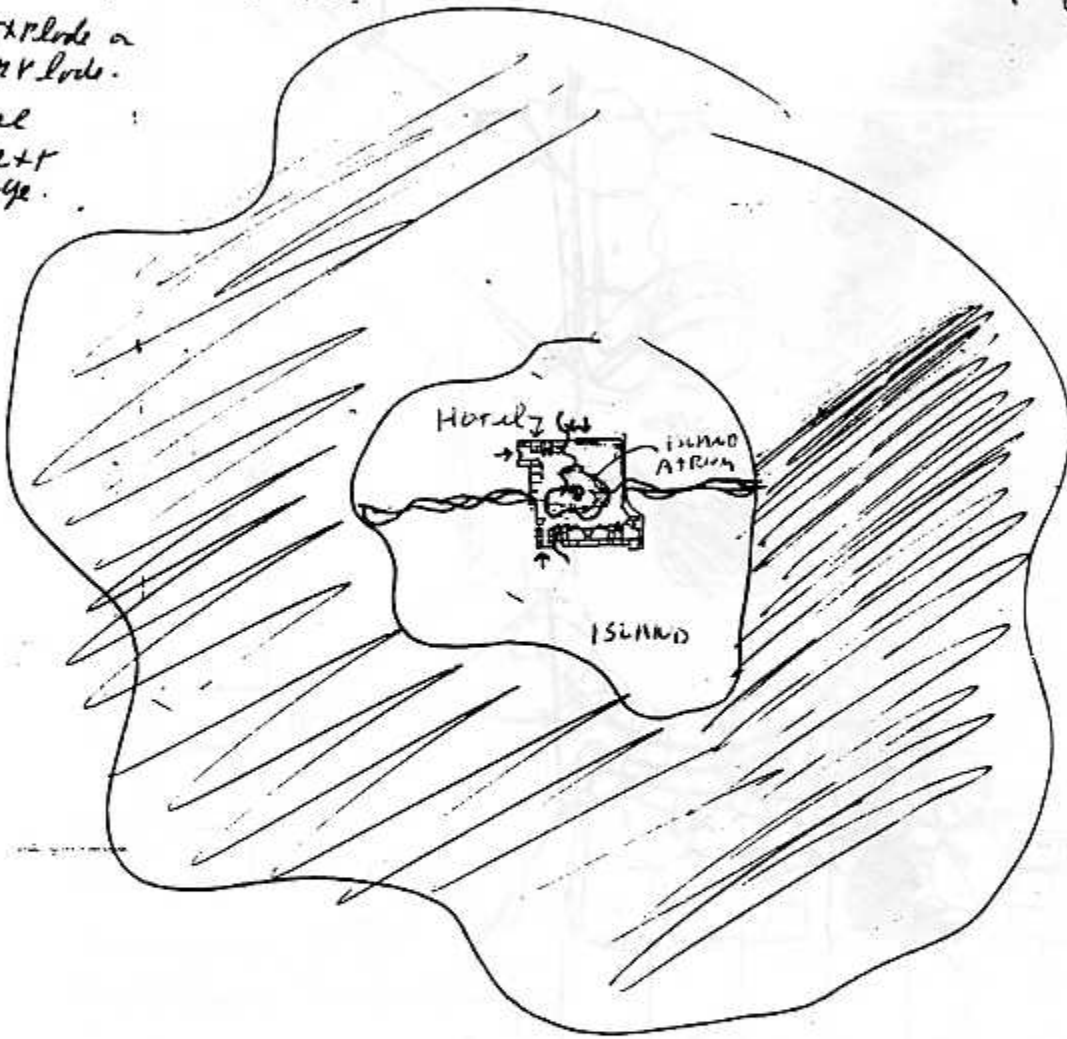
This shows a HYATT HOTEL
ON AN ISLAND.

AT THIS SCALE, WE DETERMINE
THAT THE BIG IDEA FOR
THE ATRIUM IS "ISLANDS
WITHIN ISLANDS!"

MULTI-SCALE
Continuum

EXPLORE on
IMV loads.

SEE
NEXT
PAGE.



BIG IDEA:

Islands within islands

(The site generates the
interior)



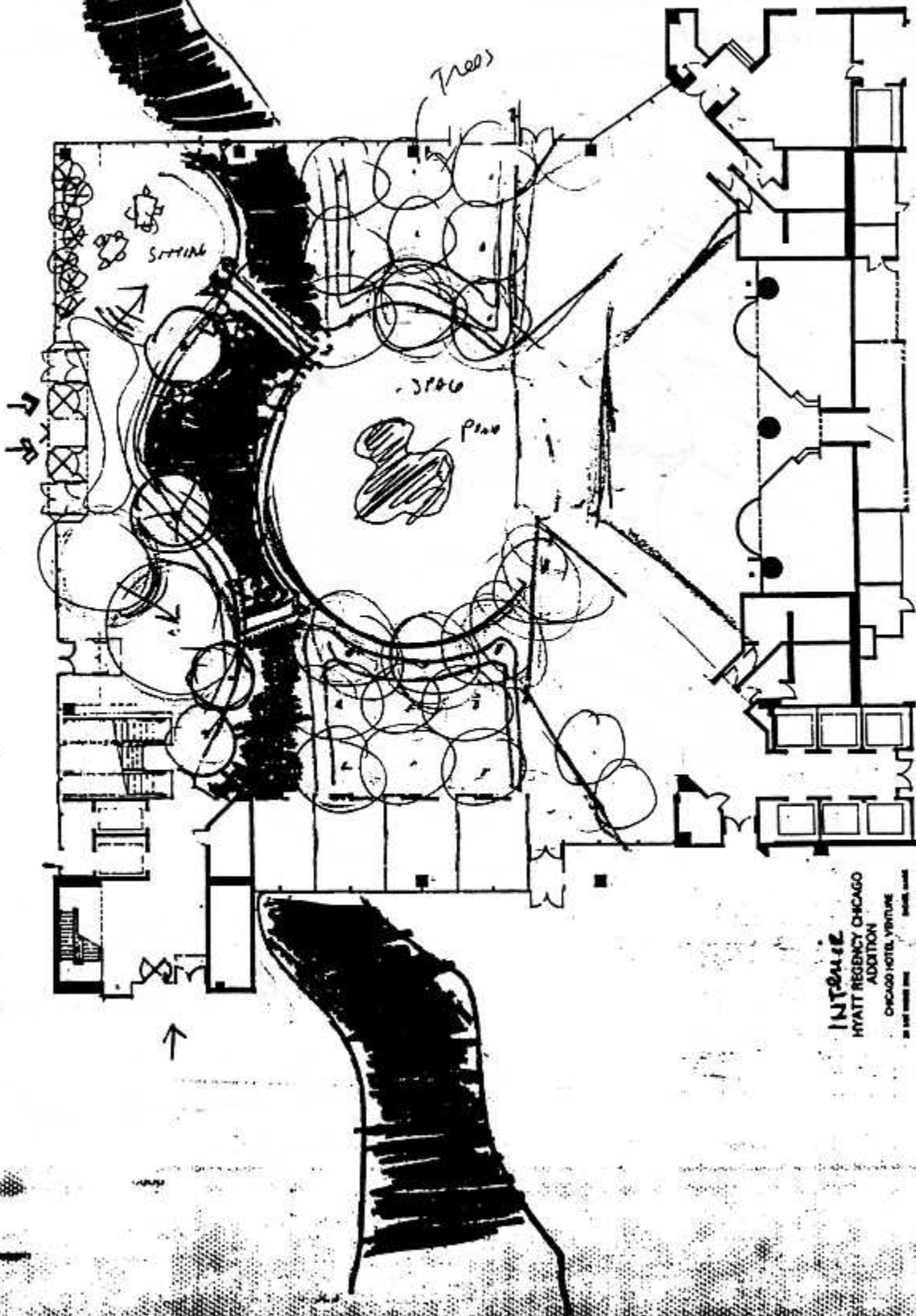
DESIGN
CONTINUUM 2

This
BIG

12th was
generated at
the B16 side of "Premis Page"
"island within island"
+ river!

Be
Neater
Tony
12/15

B16
12th

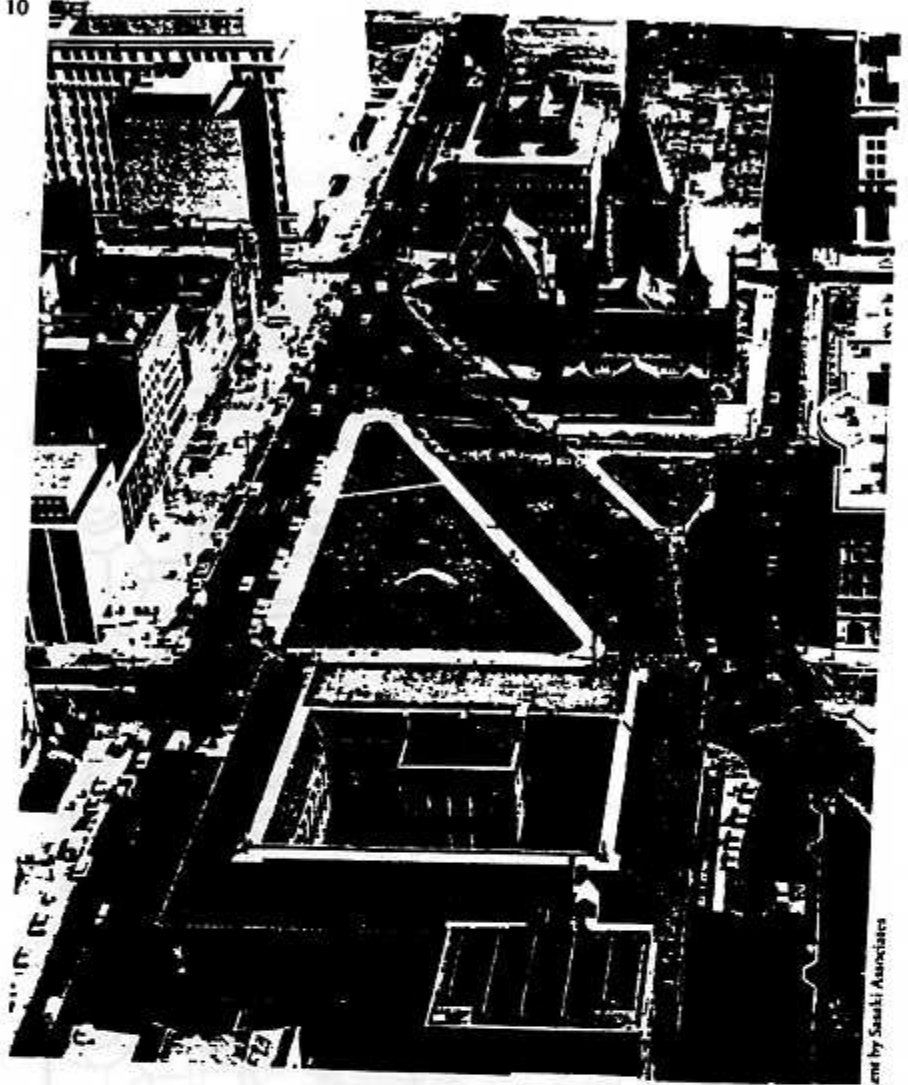


INTENCE
HYATT REGENCY CHICAGO
ADDITION
CHICAGO HOTEL VENTURE
BY THE MARRIOTT GROUP

INTENCE

Do all!
photos

10



10 Copley Square
As it appeared in 1964

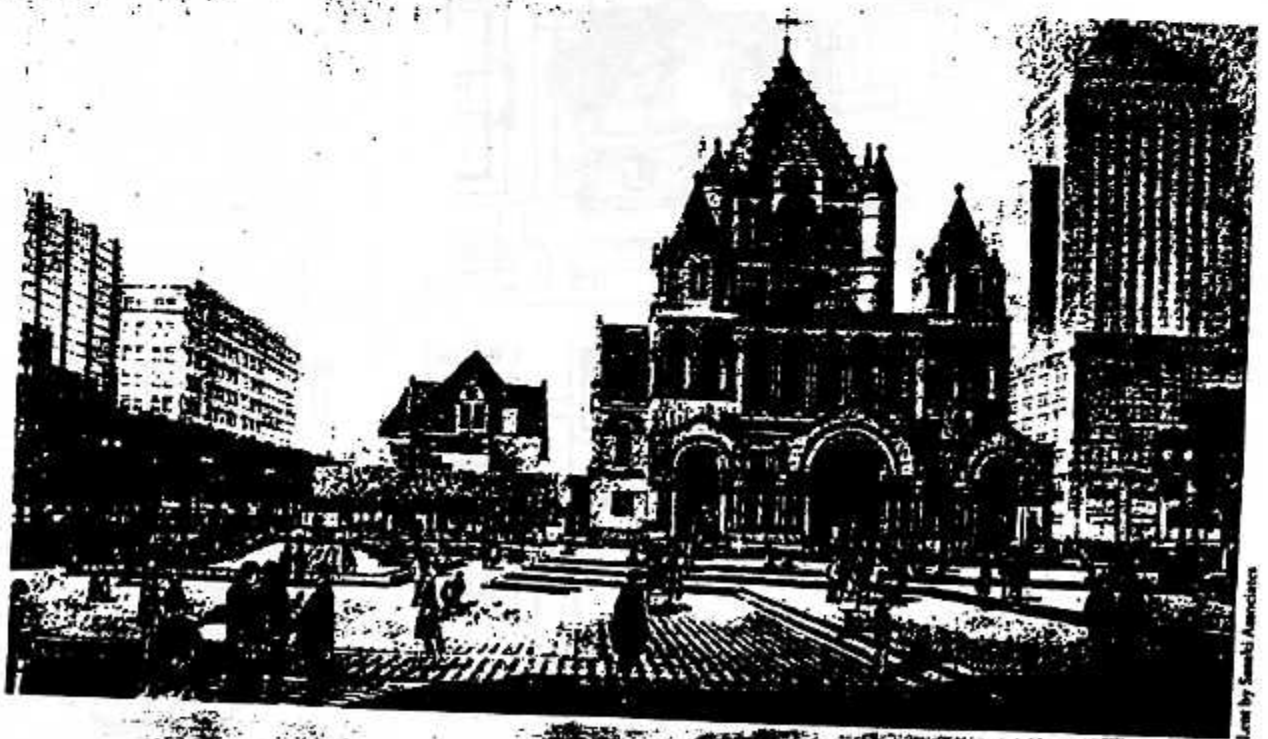
By 1964, seventy years and countless designs after the dedication of the Square, no substantial improvements had taken place. The "Square" was still two triangular patches of grass separated by Huntington Avenue. The barricades across Huntington Avenue, however, were clues to an impending change. The turnpike extension into the Back Bay had relieved traffic flow on Huntington Avenue, making it feasible to terminate it at Dartmouth Street. A national design competition authorized by Major John F. Collins, which would attract over 600 registrants and 183 proposals, was only a year away.

11 Winning Scheme, 1966 Copley Square
Competition

Sasaki Associates, 1966
Rendering by Helmut Jacoby

The honor of actually implementing a design for Copley Square went to Hideo Sasaki, Stuart O. Dawson and Kenneth DeMay, authors of the winning entry in the 1966 competition. Their scheme was finished essentially as submitted by 1969 and was warmly received by critics of the day. Copley Square, it was said, was finally a square!

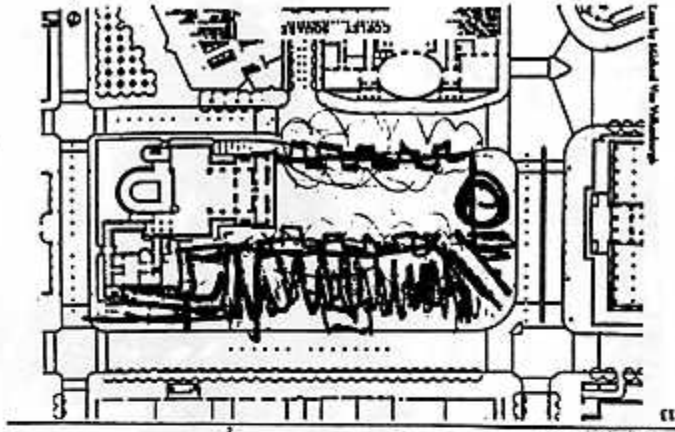
11



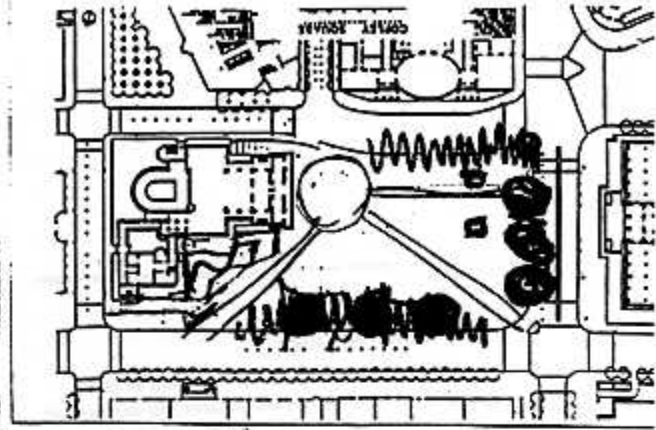
Left by Sasaki Associates

Left by Sasaki Associates

Prischi
sample



Family



Copley
Square
concepts
(see
the
archtypes)

